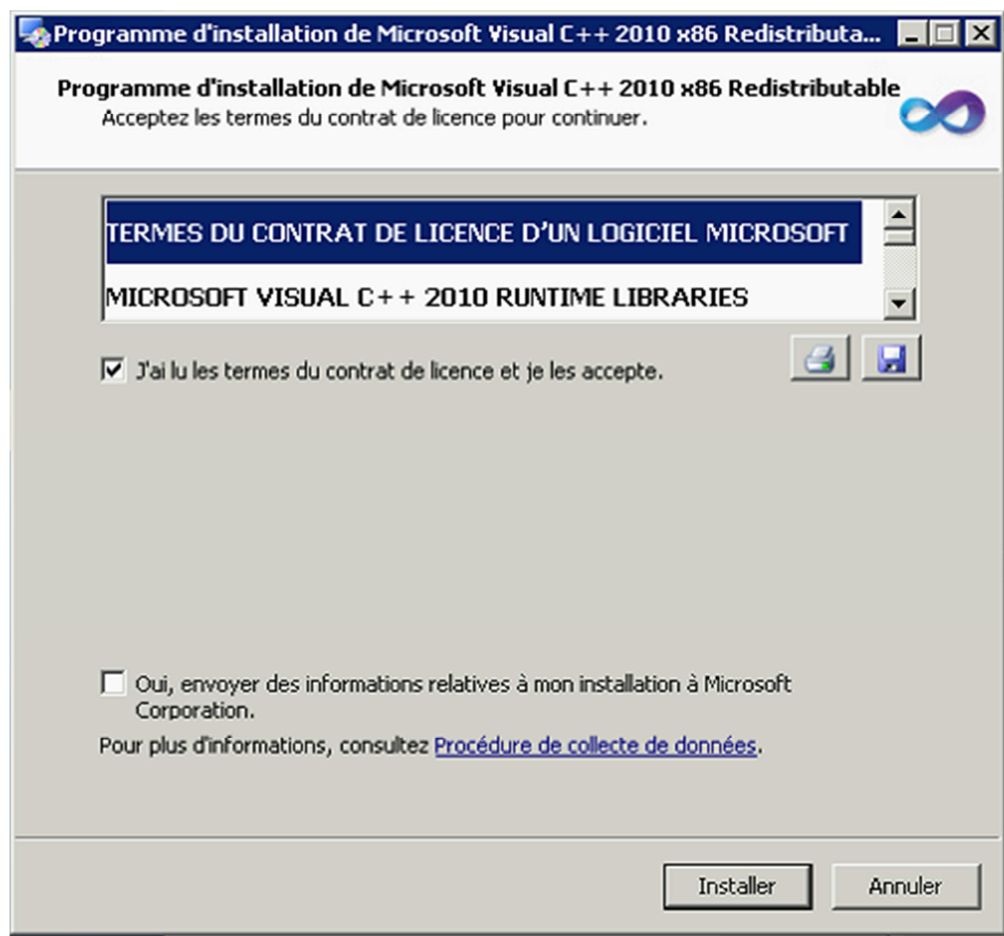
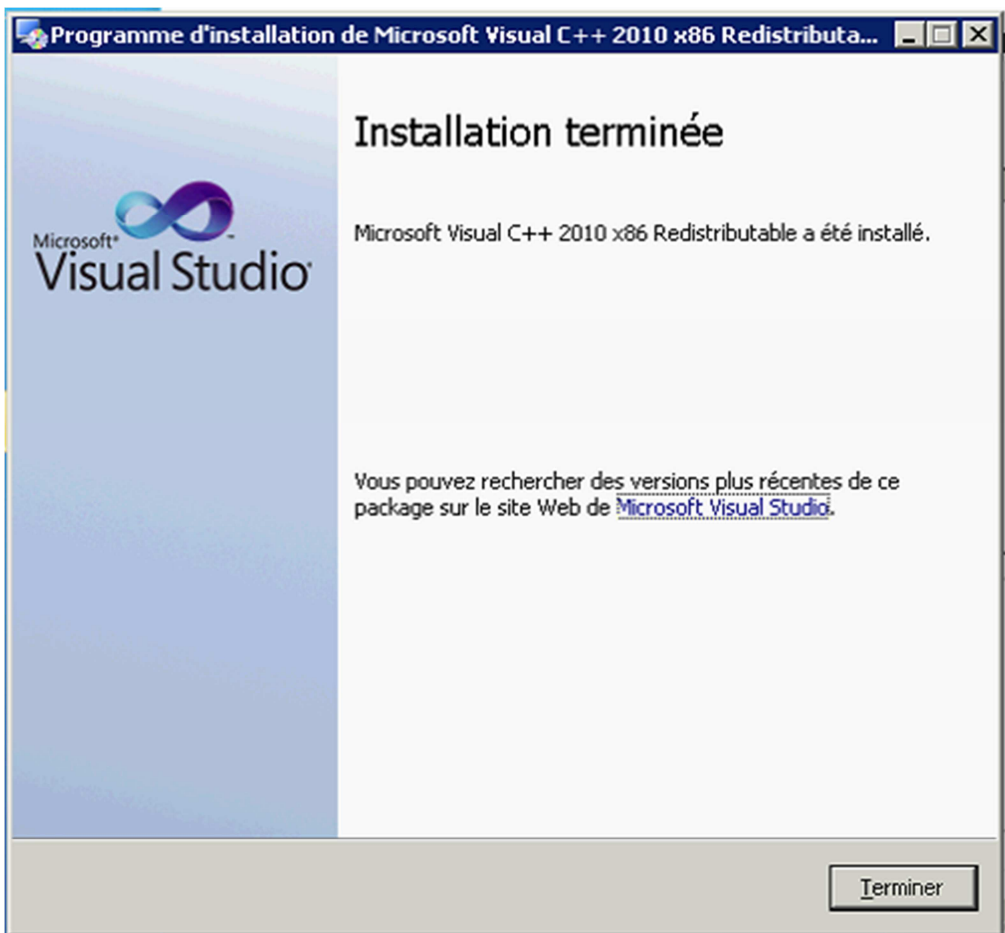
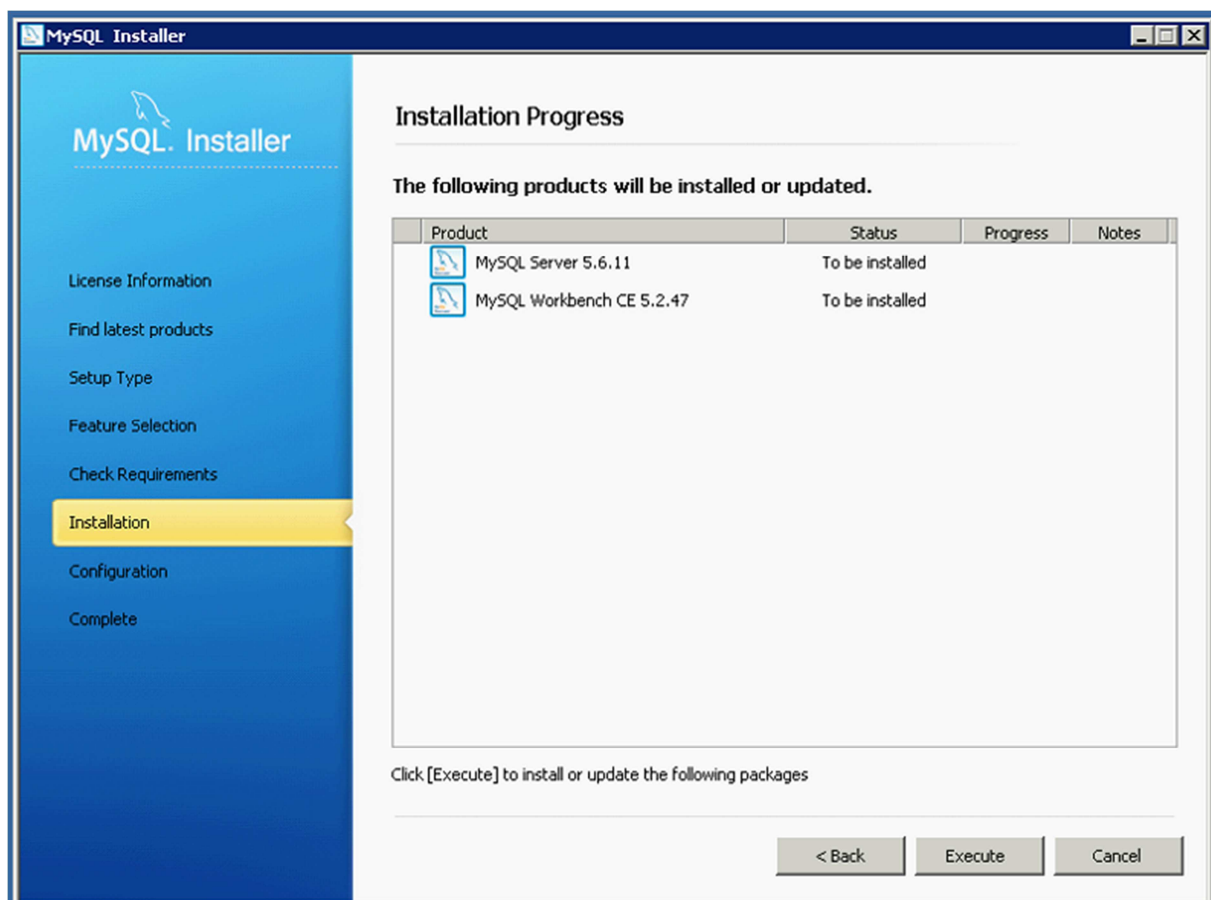
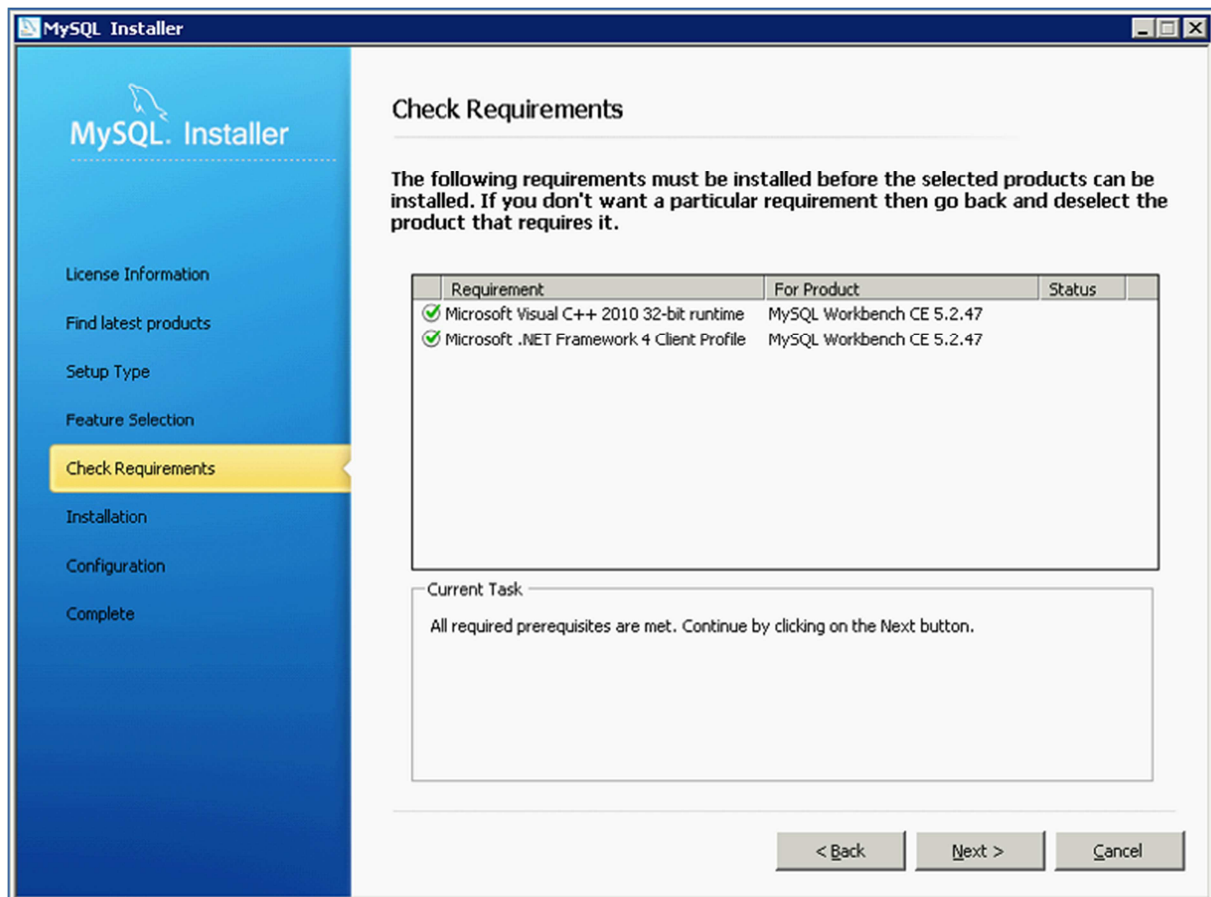


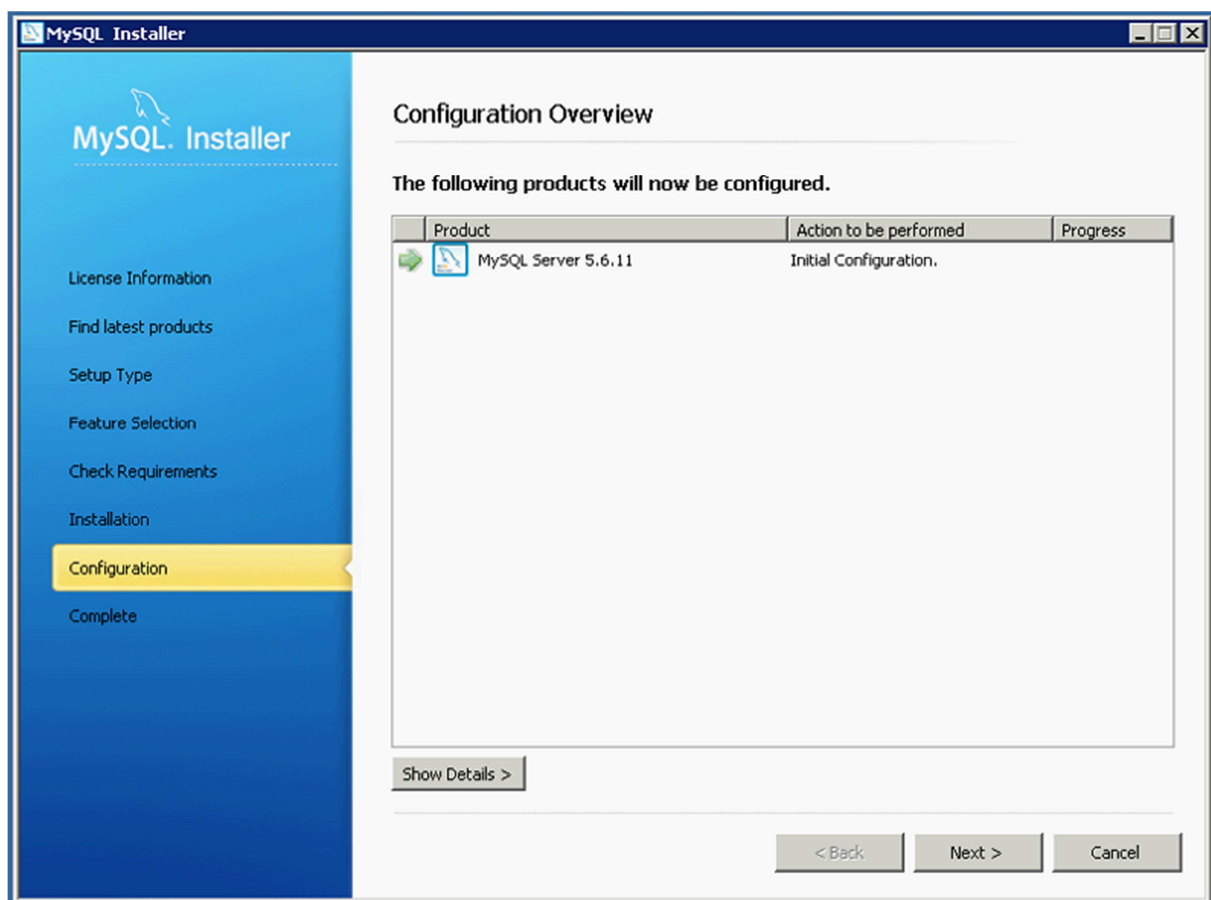
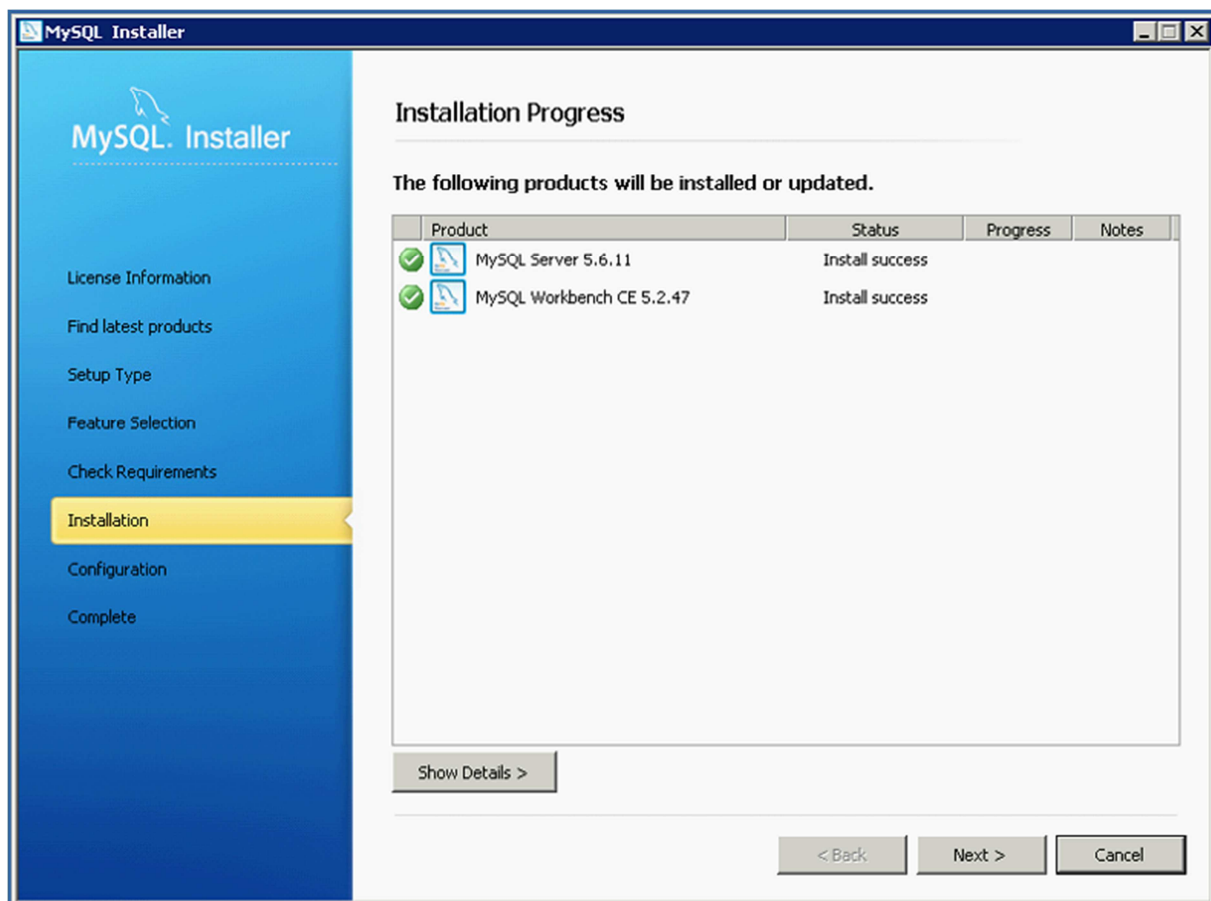
## Installation de Visual C++

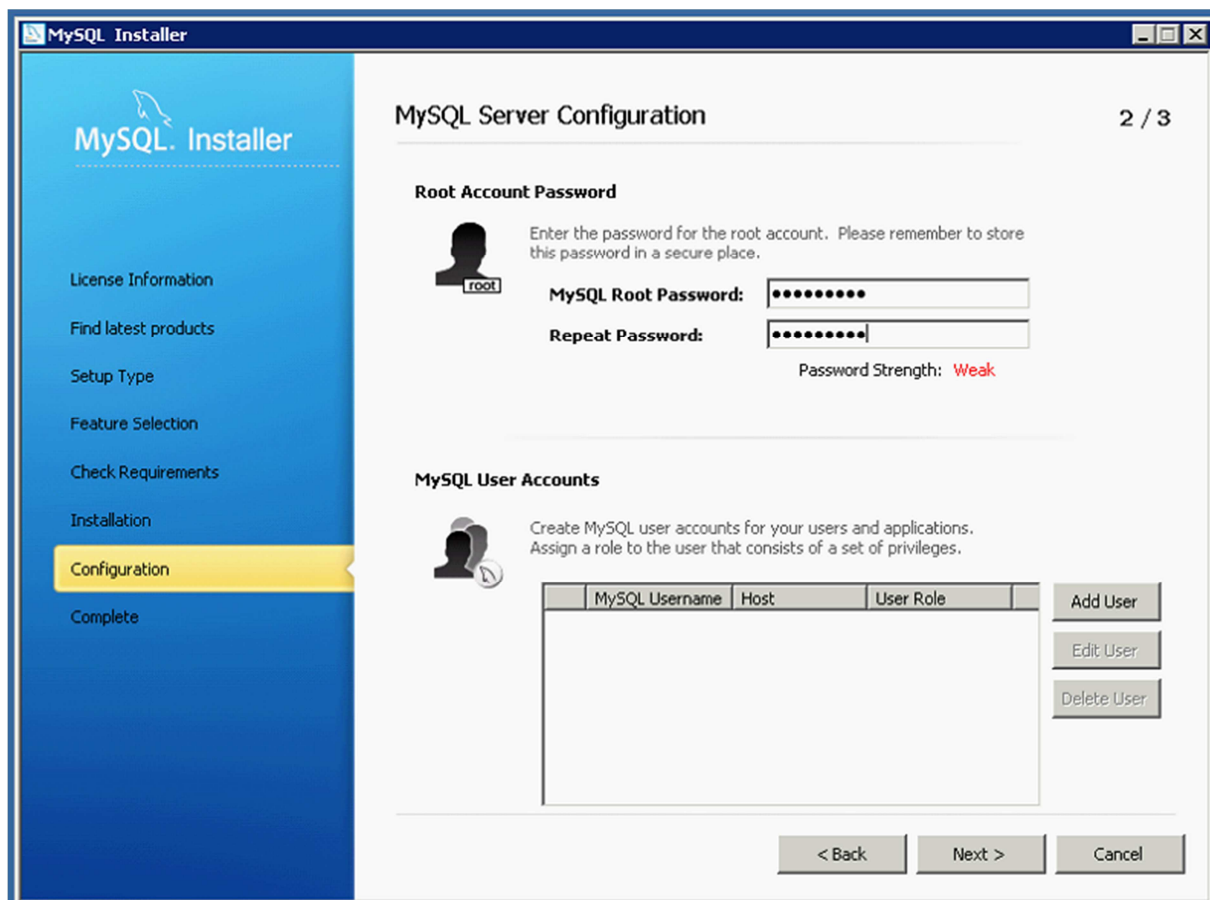
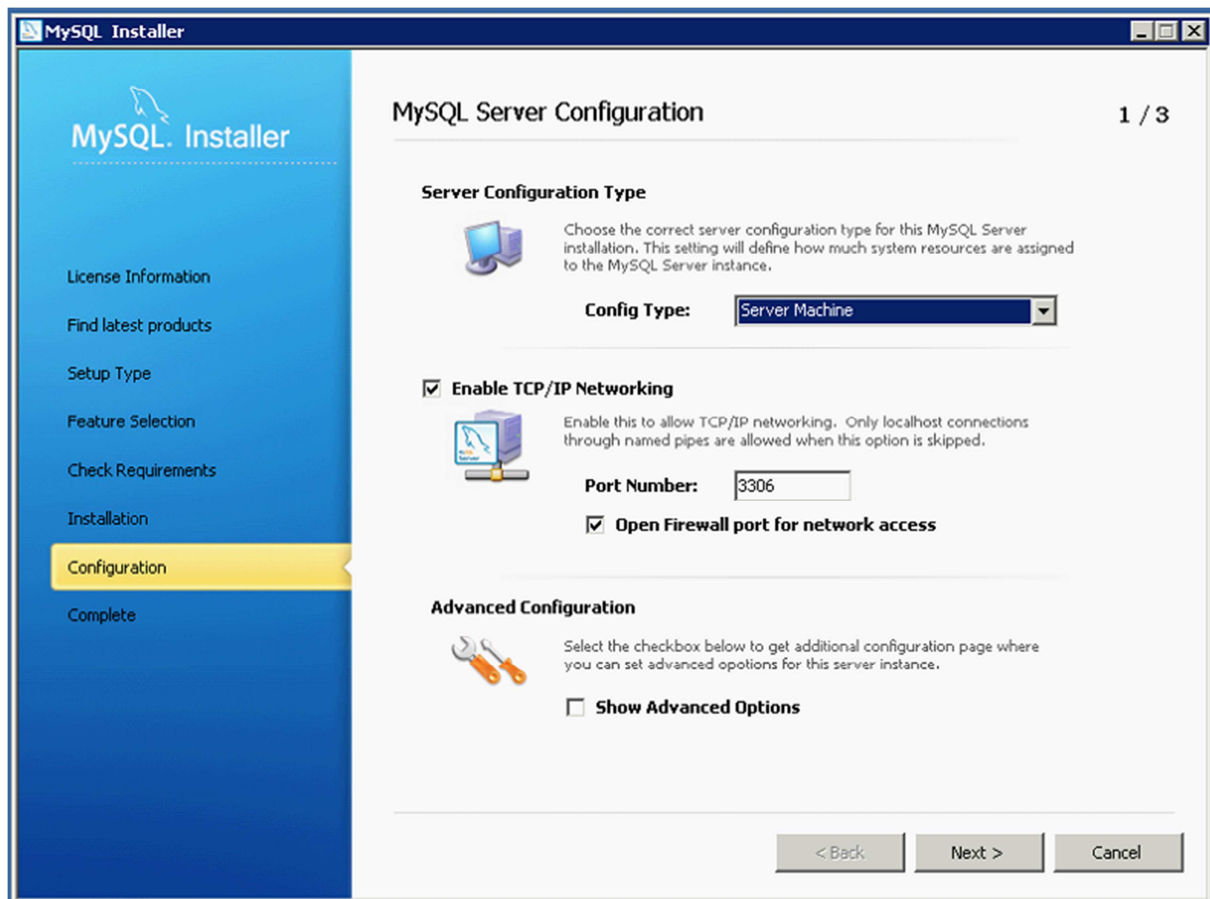













**MySQL User Details**

Please specify the username, password, and database role.

 Username:

Host:

Role:

Authentication:  MySQL

Password:

Confirm Password:


Password Strength: **Weak**

OK Cancel

**MySQL Installer**

MySQL Server Configuration 2 / 3

**Root Account Password**


 Enter the password for the root account. Please remember to store this password in a secure place.




MySQL Root Password:

Repeat Password:

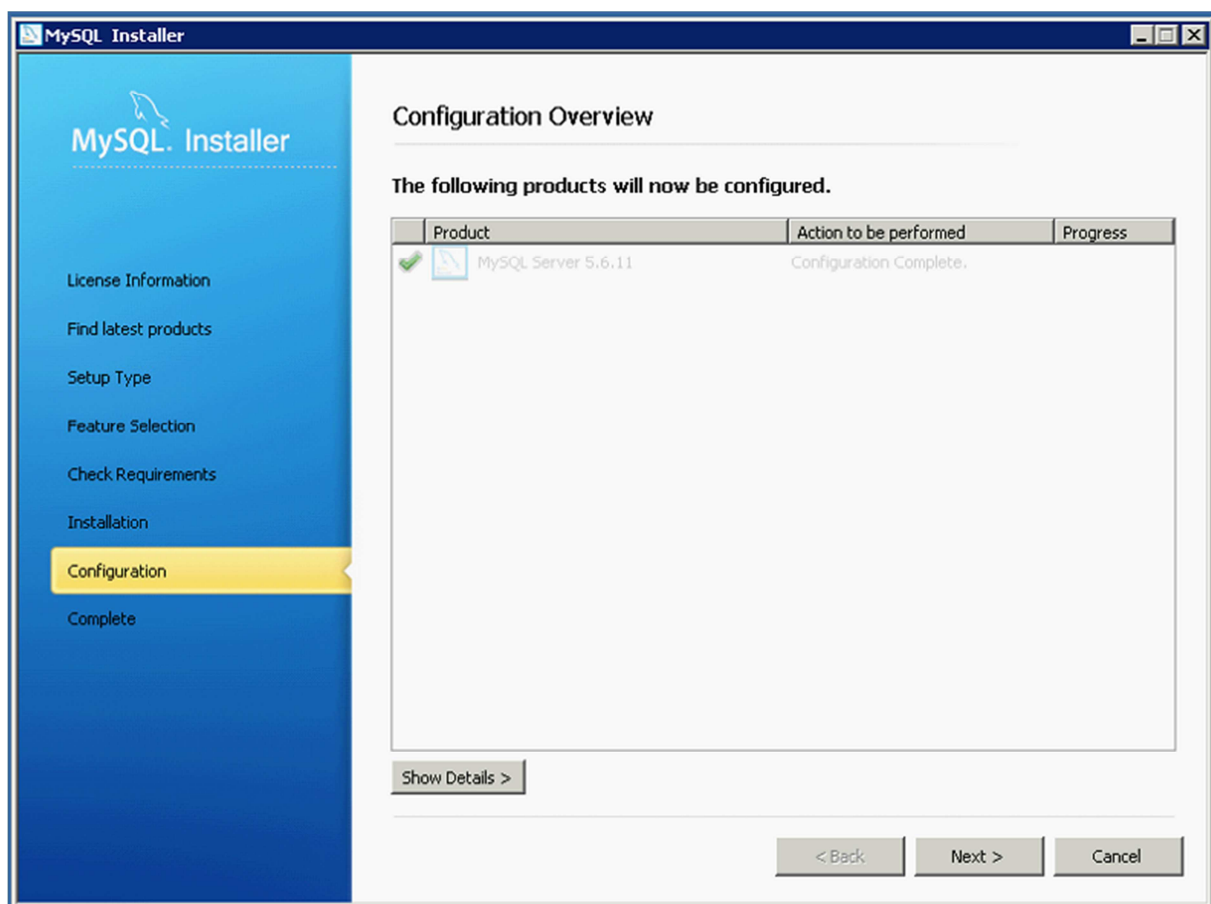
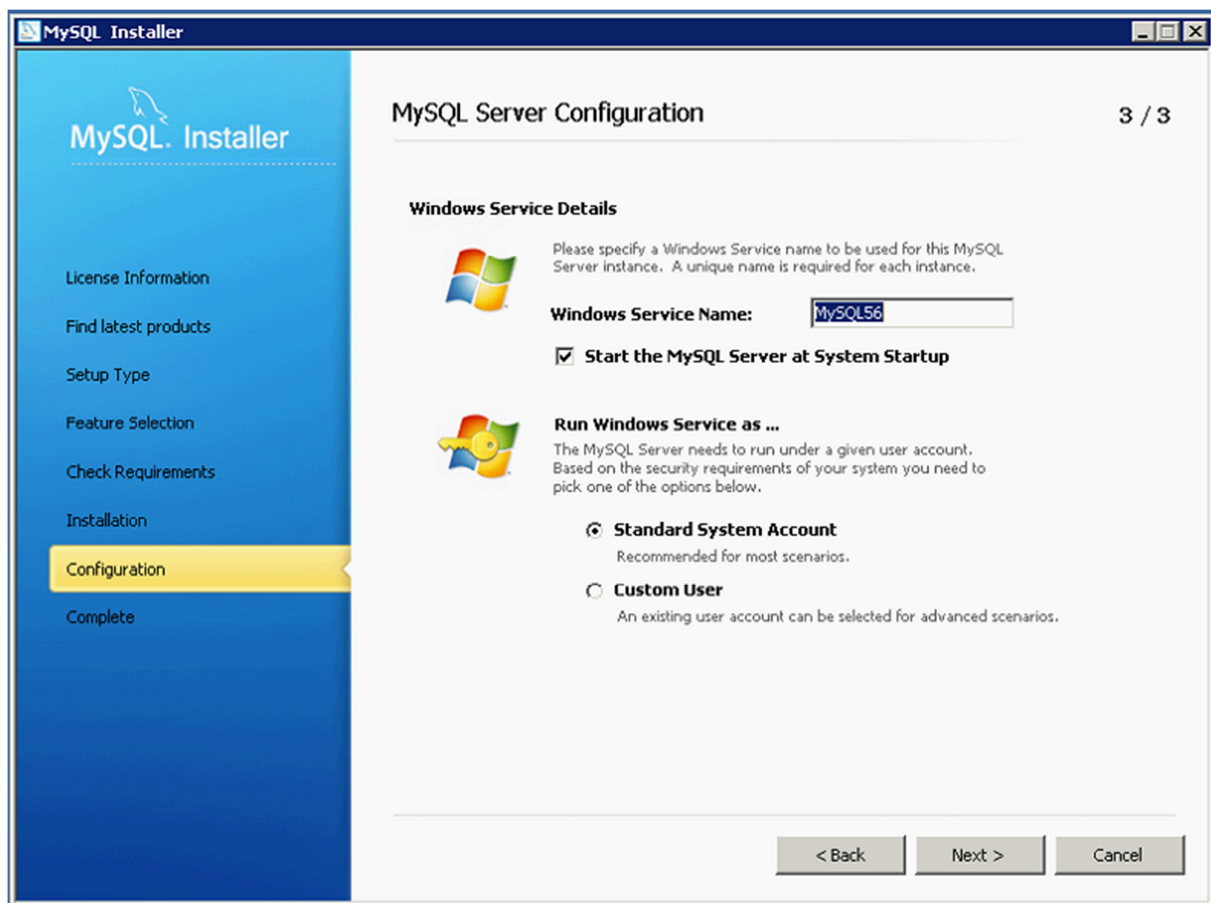
Password Strength: **Weak**

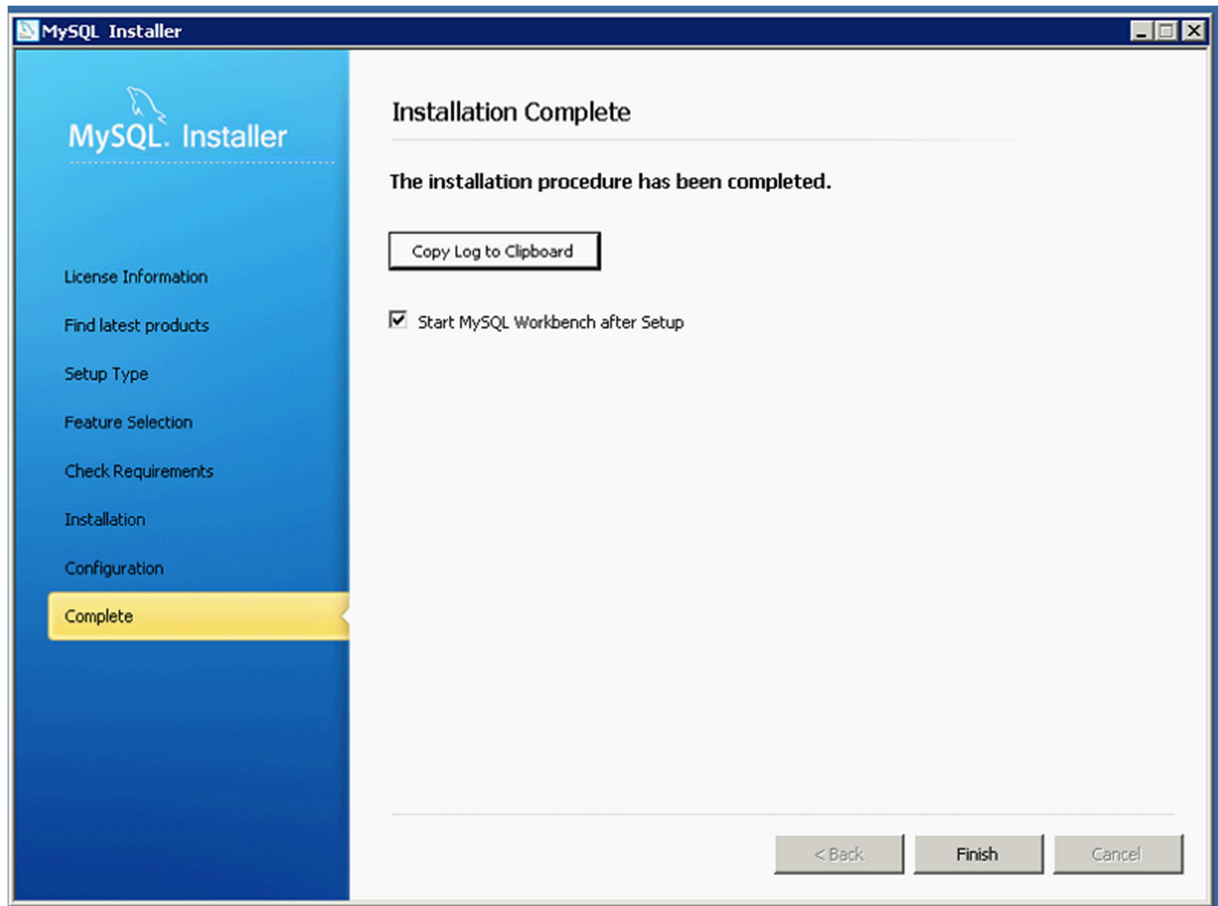
**MySQL User Accounts**

 Create MySQL user accounts for your users and applications. Assign a role to the user that consists of a set of privileges.

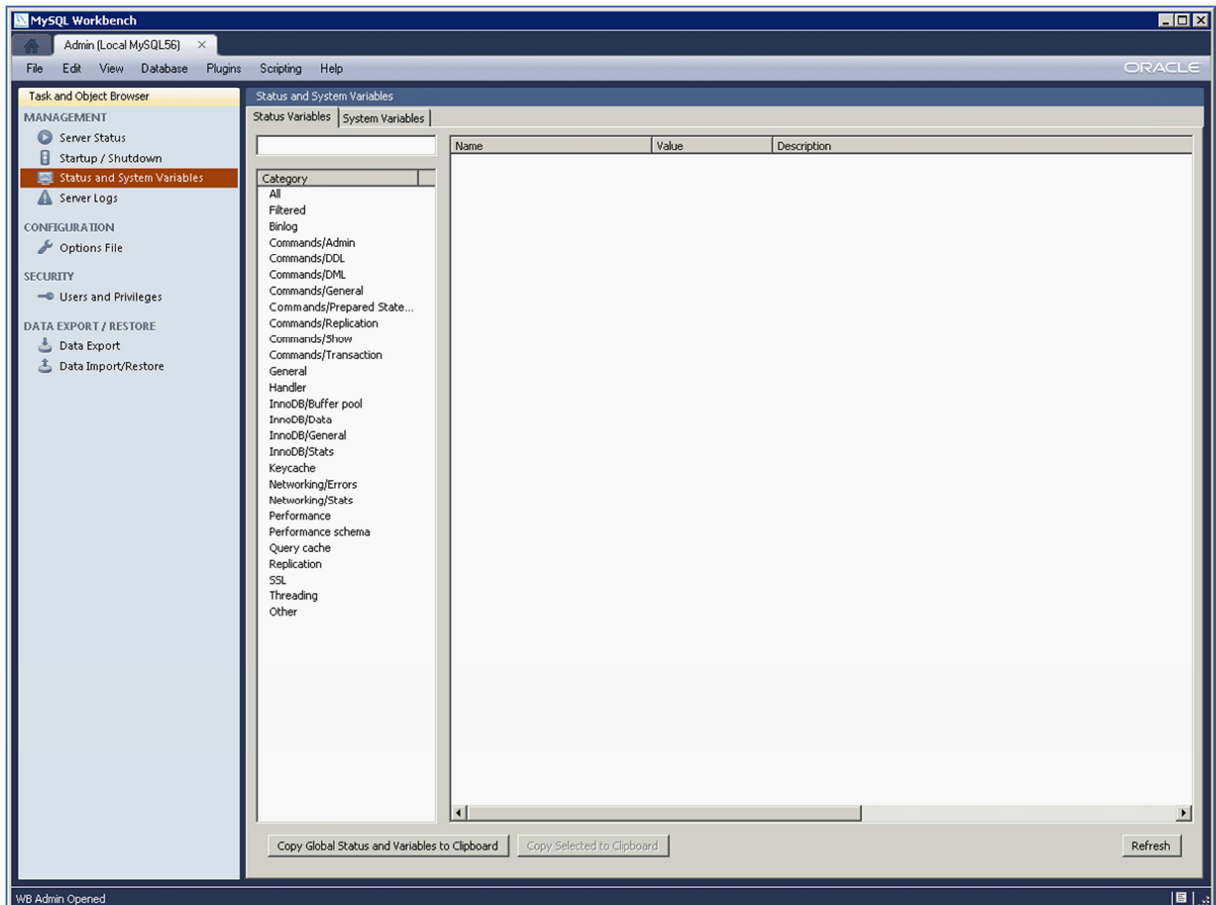
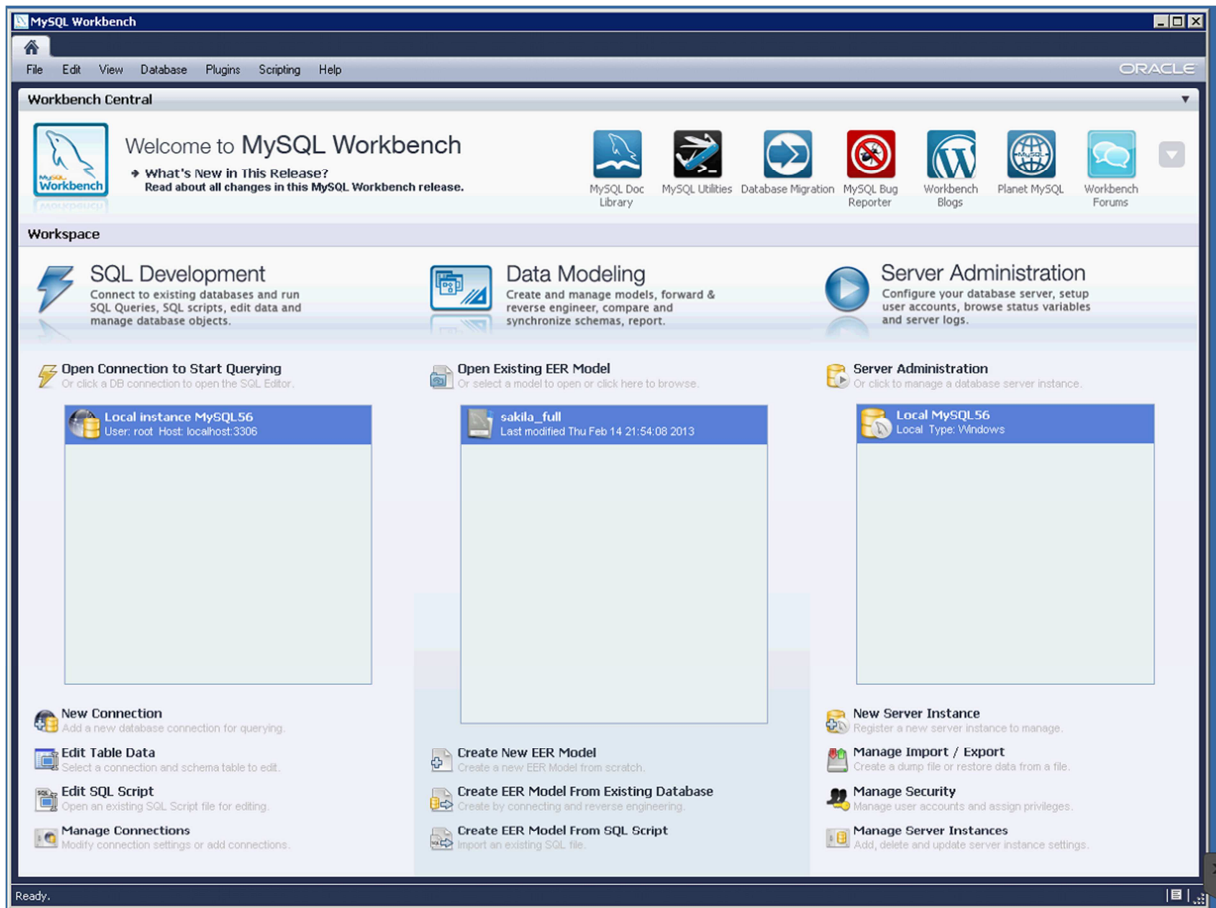
MySQL Username	Host	User Role	
 CONNECT	%	DB Admin	<input type="button" value="Add User"/>
 TIS	%	DB Admin	<input type="button" value="Edit User"/>
 TISFH	%	DB Admin	<input type="button" value="Delete User"/>
 TISCAL	%	DB Admin	

< Back Next > Cancel





WorkBench



# Variablers

